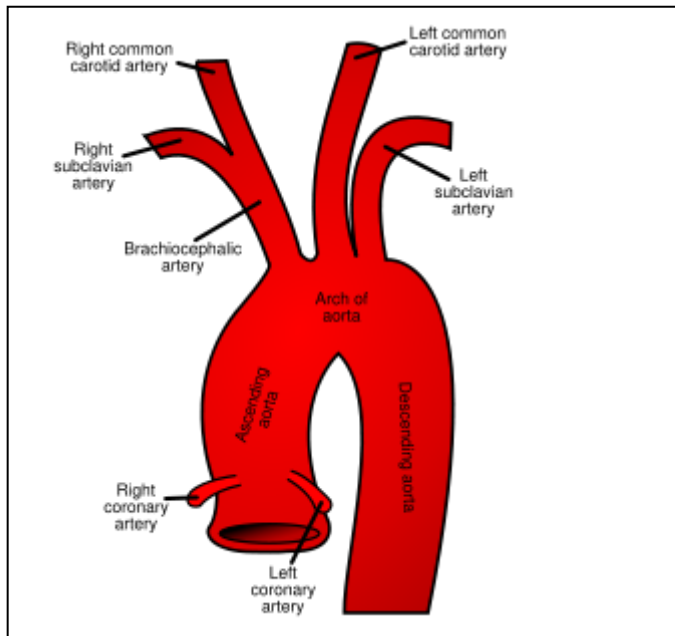


Mouse Brachiocephalic (inominate) artery sectioning for atherosclerosis analysis

- 1) Brachiocephalic artery (BCA) sections are embedded with the aortic arch down, so you will cut through the arch first.
- 2) Before sectioning please orient the chuck so that the blade cuts perpendicular to the block. Cut through the arch portion until a complete, circumferential vessel appears. This is the brachiocephalic artery.
- 3) Mark this first slide beginning the BCA and cut 5 um thickness sections, 3 per slide.
- 4) Continue cutting through the BCA until you can see an opening in one side of the vessel or the vessel splitting into two (this is the bifurcation into the right subclavian and right common carotid artery). The mouse BCA is ~1-1.5 mm in length, so this should result in ~60-90 slides. Mark this location on the last slide of the BCA.



Thanks!